

Chart 58 -- Labor cost (total wage & benefits) per passenger

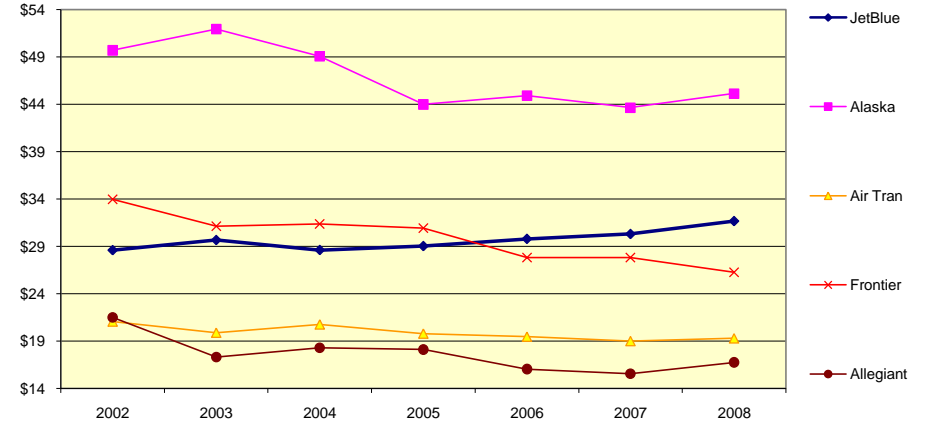


Chart 59 -- Management salary cost per passenger

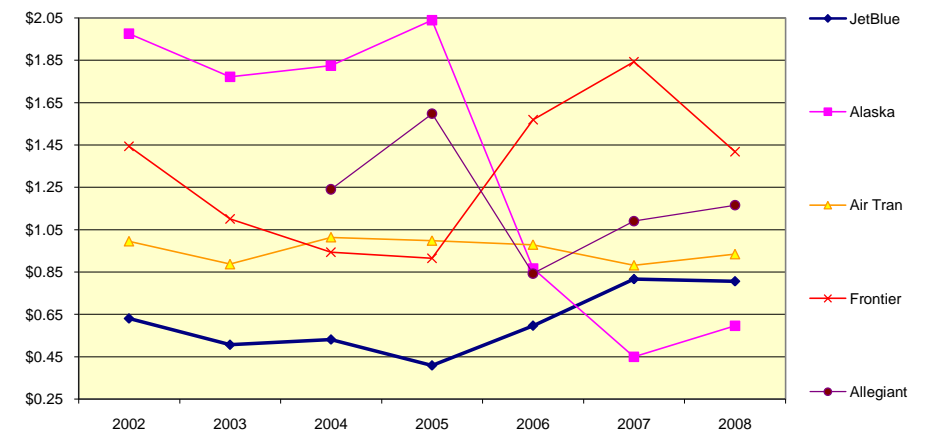


Chart 60 -- Avg pilot wage/salary cost per passenger

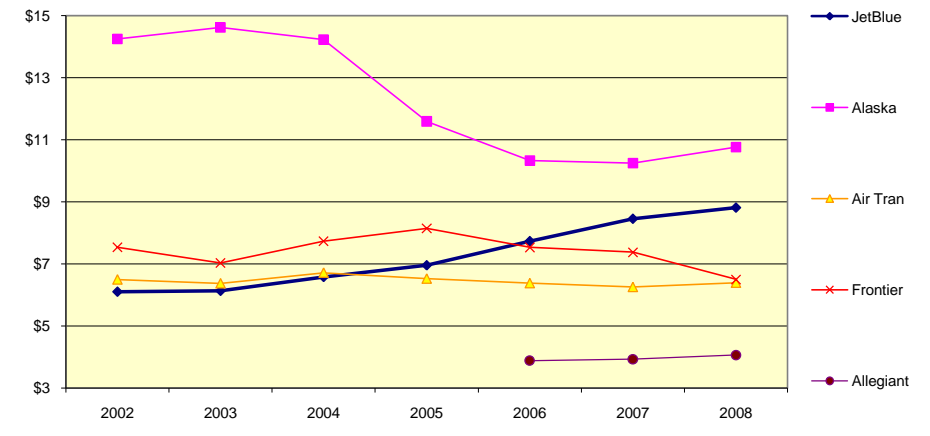


Chart 61 -- Avg flight attendant wage/salary cost per passenger

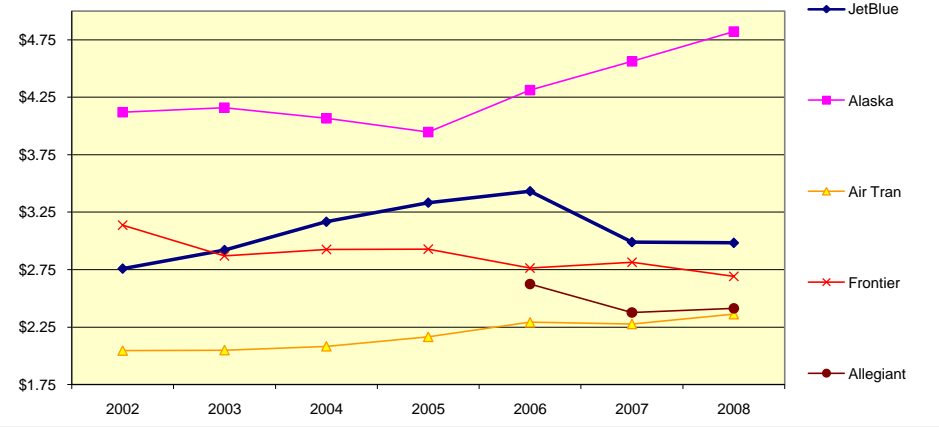


Chart 62 -- Pilot wage/salary % of avg passenger fare

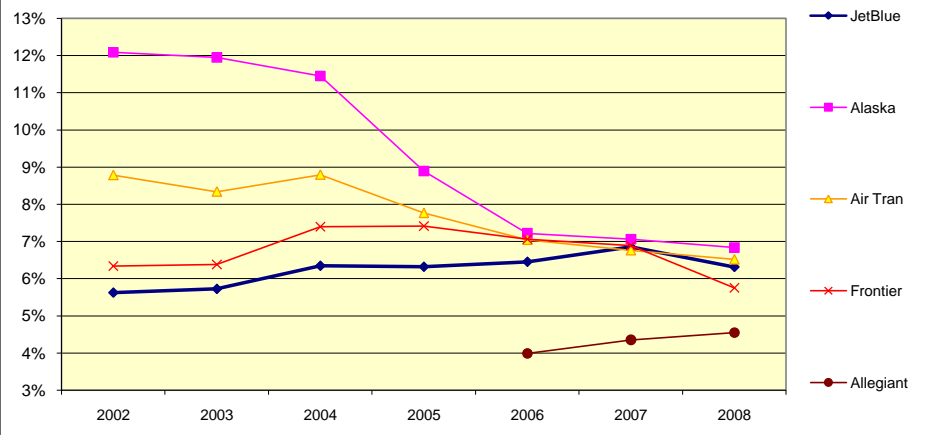


Chart 63 -- Management salary % of avg passenger fare

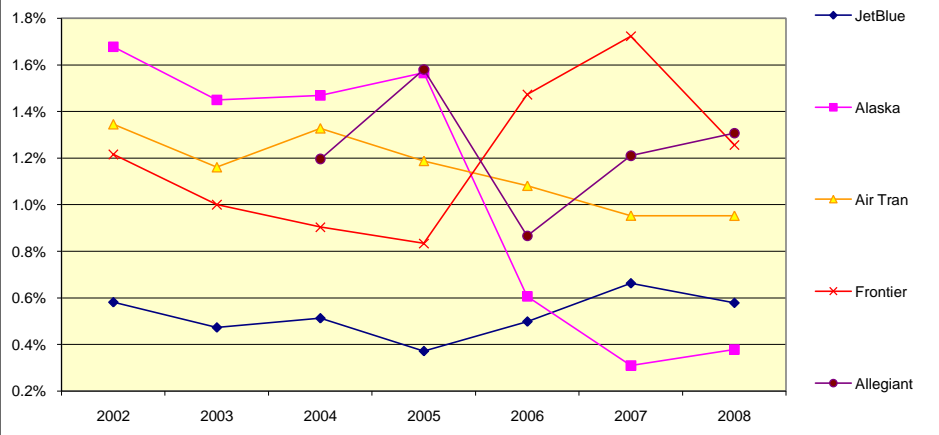


Chart 64 -- FA wage/salary % of avg passenger fare

